

# CommandCentral DEMS

Optimize digital evidence management through integrations with other products

Experience end-to-end digital evidence management with product integrations that allow you to maximize the value of your investments. With the ability to connect your digital evidence management system to other evidence capturing software, you can **tell the whole story**.

Evidence collection begins the moment a call comes in to 9-1-1, with the creation of real-time call transcripts and doesn't end until you close the case. CommandCentral DEMS provides one centralized location for digital evidence, regardless of what product it was captured with.

Whether your evidence is coming from call transcripts, audio recordings, situational awareness software or records management software, it will be automatically uploaded to CommandCentral DEMS where you can take advantage of our streamlined workflows to transform digital evidence into real cases.

Learn more about the product integrations you can take advantage of below:



## Tell the whole story

Closed cases deliver safer communities. Accelerate investigations without adding resources with an end-to-end solution.



## See more, hear more, know more

Automatically upload digital evidence from every step of the case, starting with the 9-1-1 call and ending when you close the case.



## Transform raw evidence into real cases

Once you've captured digital evidence, it's automatically uploaded to CommandCentral DEMS, where you can organize it into cases and prepare it for court.



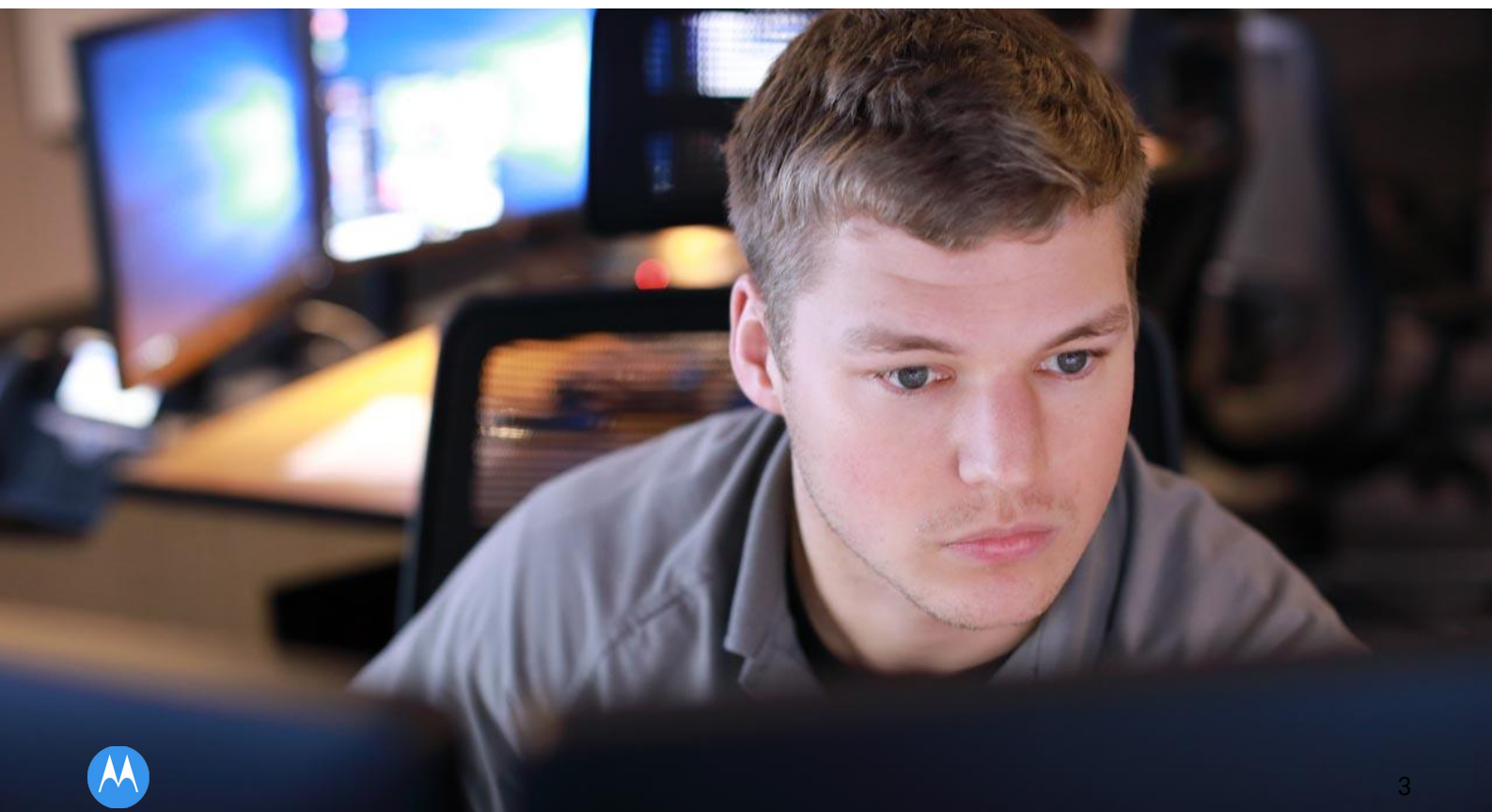


## Integrations with other Motorola Solutions products

Product	Description
Smart Transcription	A cloud based service that transcribes 9-1-1, non-emergency or administrative calls into searchable text, offering an easy but comprehensive way to include call transcripts in your cases. Transcripts and audio are stored in CommandCentral DEMS.
CommandCentral Responder	A mobile application that allows users to capture media, record notes and tag items in the field. They can also be linked to cases and incident records for secure digital evidence management within CommandCentral DEMS.
VideoManager	Include additional body camera footage to your cases and transcribe the audio, redact sensitive information and assign to a case in CommandCentral DEMS.
Flex records	Utilize CommandCentral AssetSync to connect digital evidence that is saved on your Flex server to the cloud based CommandCentral DEMS, allowing you to add it to corresponding collections.
Flex CAD	CAD data is used to automatically add the correct metadata tags to media files within CommandCentral DEMS.
PremierOne Records	Upload attachments and case folders from PremierOne Records to CommandCentral DEMS so you can maintain digital evidence from one secure location.
PremierOne CAD	CAD data is used to automatically add the correct metadata tags to media files within CommandCentral DEMS.
CommandCentral Records	Push records into CommandCentral DEMS where they can be viewed, managed and shared with prosecutors.
CAPE	Upload photos, videos and live stream recordings captured from drones to CommandCentral DEMS for effective management and case assignment.



Product	Description
CommandCentral Citizen Input	Engage with your community and take advantage of evidence that may have been captured on cell phones or third party cameras.
10-21 police phone	Securely contact citizens without revealing personal numbers. Call audio is stored in CommandCentral DEMS.
ViQi	Enhance the functionality of radio communication devices with this voice-activated AI. Any audio files, transcripts and other metadata is stored in CommandCentral DEMS.
CommandCentral Aware	Utilize CommandCentral DEMS storage solution with your situational awareness software.
SmartControl Mobile App	Securely review and organize footage from your devices in the field, so you can manage it the moment it's captured. SmartControl also allows you to adjust camera settings in the field and provides summaries for your devices, like remaining recording capacity and battery life.
M500 Interview Recording System	Record and live stream interviews as they unfold, ensuring you capture key witness and suspect information. Footage is automatically uploaded to CommandCentral DEMS where you can prepare it for court.



# Integrations with non Motorola Solutions products

Product	Description
Axon's evidence.com	Electronically send case files, including relevant data such as the officer name, unit and recording time, to Axon's evidence.com. This allows you to easily share with your judicial partners who require cases and data to be housed in evidence.com.
3rd party CAD and RMS integrations	<p>CommandCentral DEMS integrates with various 3rd party CAD and RMS systems so you can have the correct metadata tags and records attached to your cases. View a few of the 3rd party systems we work with.</p> <ul style="list-style-type: none"><li>• CED</li><li>• CentralSquare</li><li>• CLEMIS</li><li>• DispatchNow</li><li>• Enforsys</li><li>• Enterpol</li><li>• ICS</li><li>• InfoShare</li><li>• JusticeOne</li><li>• Mark43</li><li>• OneSolution OSSI</li><li>• Prophoneix</li><li>• SmartCop</li><li>• Southern Software</li><li>• Sun Ridge System Inc (RIMS)</li><li>• TechShare</li><li>• Tiburon</li><li>• TriTech</li><li>• Tyler Technologies</li><li>• Truelo</li></ul>

*This list is not comprehensive, please reach out if you'd like more information.*

Learn more about our digital evidence management system and contact us at [motorolasolutions.com/commandcentraldems](https://motorolasolutions.com/commandcentraldems)



Motorola Solutions, Inc. 500 West Monroe Street, Chicago, IL 60661 U.S.A. [motorolasolutions.com](https://motorolasolutions.com)

Only available in North America.

MOTOROLA, MOTO, MOTOROLA SOLUTIONS and the Stylised M Logo are trademarks or registered trademarks of Motorola Trademark Holdings, LLC and are used under license. All other trademarks are the property of their respective owners. ©2025 Motorola Solutions, Inc. All rights reserved. 4-2025 [RL01]